



The Dar es Salaam Stock Exchange Quarterly Update

ISSN No. 0856 8448

Issue No. 52

June, 2012

CONTENTS

1. Market Report A. Equities B. Bonds

2. New Listings

3. Strategic Development Matters

4. Public Education

5. Corporate Actions

6. Statistics and Charts

1. MARKET REPORT

A. EQUITIES

Market Capitalization & Indices

Market Capitalization increased from TZS 11,776.57 billion as at 31st March 2012 to TZS 12,772.79 billion as at 30th June 2012. This was a growth of 8.46% compared to the preceding quarter.



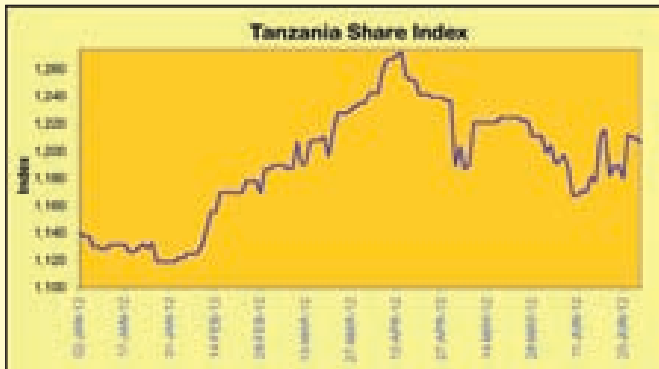
All Share Index moved by 8.46 % from 1,325.69 points as at 31st March 2012 to 1,437.84 points as at 30th June 2012.

Listing of Kenya Airways rights issue was the main contributor in the appreciation of both the market capitalization and the DSE All Share Index. Other contributions were price gains in local securities including TATEPA (14.04%), TOL (10.00%), NMB (9.41%) and SWISSPORT (4%). CRDB and TBL prices depreciated in value by 16.67% and 6.87% respectively.



¹Base year/value for All Share Index: 15 Dec 2006=1,000

Tanzania Share Index declined by 2.29% from 1,235 points as at the end of March 2012 to 1,207 points as at the end of June 2012. This is also linked to CRDB and TBL prices depreciation.



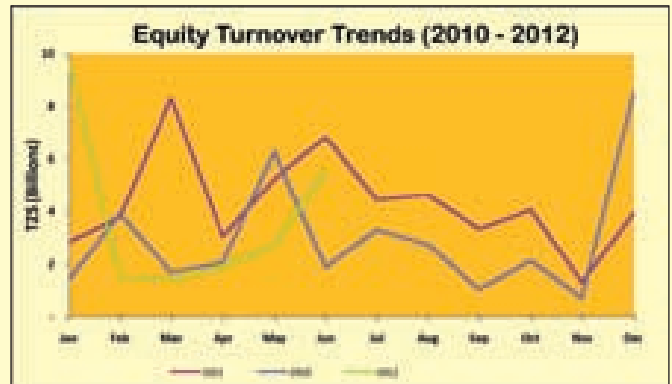
Banking & Investment Index declined by 3.2% to 967.44 points at the end of June, 2012 compared to 999.40 points recorded in the previous quarter. The decline was mainly contributed by a fall of CRDB share price by 16.67%, whereas NMB share price grew by 9.41% while DCB and KCB share prices remained the same.



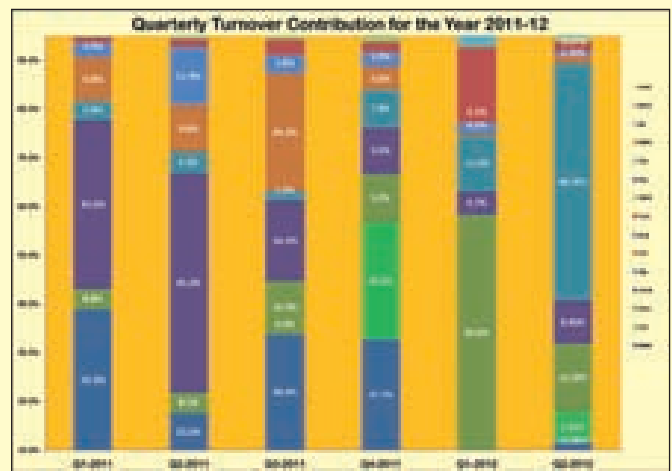
Industrial & Allied Index decreased by 2.13% moving from 1,498.63 points as at 31st March, 2012 to 1,466.77 points as at 30th June, 2012. During the quarter TATEPA, TOL, TWIGA and TCC share prices appreciated by 14.04%, 10%, 0.83% and 3.75% respectively. SIMBA share price remained the same while TBL price dropped by 6.87 %.

Turnover Trend

During the quarter under review, the number of deals and volume of equity transactions increased by 1.39% and 18.35% respectively but turnover declined by 19.29 % when compared with the previous quarter.



The composition of turnover generated during the quarter is as indicated below:



TBL, NMB and TPCC shares were the most traded stocks in the market accounting to 48.7%, 16.58% and 13.79% of the quarterly turnover, respectively.

During the quarter under review, TTP and TOL ranked first and second respectively, in terms of price appreciation while in terms of turnover contribution TBL and NMB ranked first and second respectively.



LOSSERS	% LOSS	ENDING PRICE	AVERAGE NUMBER OF DEALS	AVERAGE TRADING TZS
CRDB	18.33	122.5	11	17,633,149.51
TBL	7.58	2,440	12	93,218,664.53
GAINERS	% GAIN	ENDING PRICE	AVERAGE NUMBER OF DEALS	AVERAGE TRADING TZS
TTP	14.04	325	2	163,297,491.25
TOL	10.00	220	2	1,746,196.84
NMB	5.68	930	9	28,517,151.19

Foreign Investors' Participation in Secondary Equity Market

During the quarter under review, foreign investors' participation in secondary trading depicted a declining trend. The percentage of turnover contributed by foreign investors stood at 7.48% compared to 10.77% recorded in the previous quarter.

Details	Jan - Mar 2012	Oct - Dec 2011
Turnover (TZS Mn)	10,146.11	12,572.67
% Buying Local Investors	92.52	89.23
% Buying Foreign Investors	7.48	10.77

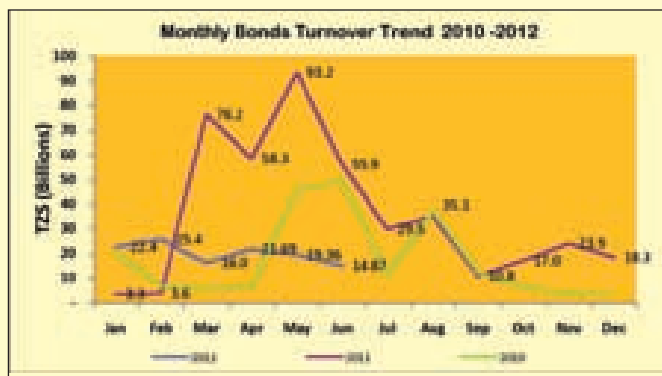
B. BONDS

(i) Secondary Trading

In the fixed income market segment Government bonds worth TZS 55.9 billion were traded during the quarter. The turnover declined by 12.4% when compared to the preceding Jan to March 2012 quarter. In the preceding quarter, Government bonds worth TZS 63.8 billion were traded.

Government bonds with nominal value of TZS 310.2 billion were traded in the last 12 months.

(ii) Yield Curve on Secondary Bond Market

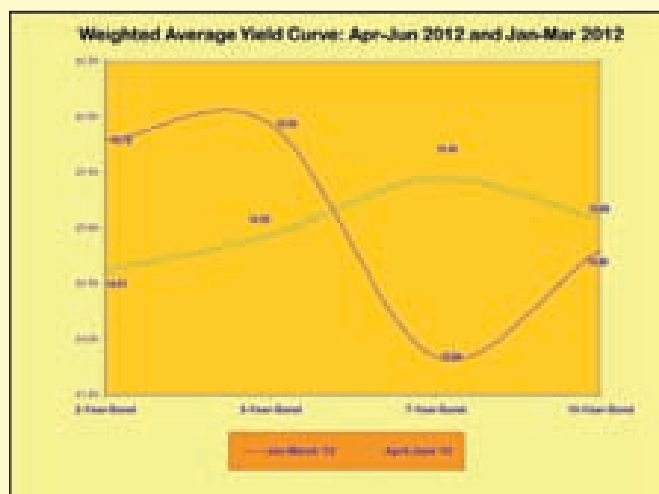


During the quarter under review, the market recorded mixed demand pattern with clear appetite for 7 year than the longer 10 year government bonds. The yield curve however portrayed a better posture than the glaring inverted curve during the Jan – Mar 2012 quarter. On average, YTM for Two year bond declined to 14.61% from 15.79% recorded in the last quarter. During the same period a Five year bond decreased to 14.93% from 15.94% recorded in the last quarter.

Seven year bond increased by 11.63% from 13.84% to 15.45 and ten year bond increased by 1.89% from 14.80% to 15.08%.

As shown above the yields for longer maturities continued to depict inverted trend as the 7-year bonds claimed higher yield compared to the 10-year bonds.

2. NEW LISTINGS

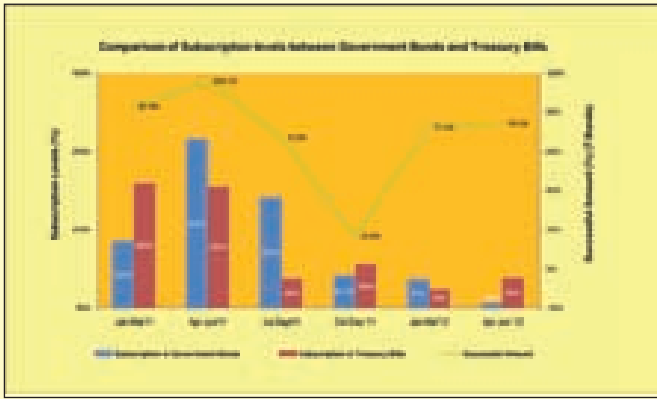


There was no IPO but additional listing of KQ shares was recorded during the quarter. Regarding bonds market, Treasury bonds with different maturities worth TZS 105.4 billion were listed during the quarter. Comparatively, Treasury bonds worth TZS 170.3 billion were listed in the quarter ended 31st March 2012, representing a decrease of 38.1% of amount listed.

Treasury bonds with outstanding amount of TZS 2.29 trillion were listed at the DSE as at 30th June 2012.

Term Preference on Fixed Income Instruments

Generally there was decrease in subscription levels for both Long term and Short term securities. During the quarter the overall subscription level stood at 72% compared to 81% achieved during the previous quarter.



3. STRATEGIC DEVELOPMENT MATTERS

3.1 DSE Strategic Plan

During the quarter under review, the DSE 5- year Strategic Plan was finalized. Preparation of the plan involved the Governing Council, the market intermediaries and all important stakeholders. The review and improvement process culminated in a general stakeholders’ workshop on 23rd May 2012. The new strategy outlines the DSEs vision for new products and improved services and increased sustenance.

3.2 DSE’s New Office Building

During the quarter under review, DSE moved from Twiga Building to the new PSPF Golden Jubilee Tower. DSE is now housed in the 14th Floor of the PSPF Golden Jubilee Tower



4. PUBLIC EDUCATION

Announcements

During the quarter under review DSE hosted a total of 22 visiting students from various institutions i.e. Kirinjiko Islamic School (18 students) and Ubungo Islamic School (4 students). DSE also received 3 individual researching students from Institute of Rural Development Plan Dodoma (1 students) and University of Mzumbe (2 students).

5. CORPORATE ACTIONS

Announcements

- (1) NMB announced annual result for 2011. The Bank reported Profit before Tax of TZS 102 billion and Profit after Tax of TZS 72 billion. The AGM approved a total dividend attribution of TZS 25 billion, representing a 35% dividend pay-out ratio of the bank’s annual profit, or TZS 50 per share
- (2) Simba cement announced a financial result for the year ended 31st December 2011 and declared profit after tax of TZS 21,929 billion. The Board approved a final dividend of TZS 47 per share. This amounts to TZS 3 billion.
- (3) DCB announced financial result for the year ended 31st December and reported a profit of TZS 3.3 billion. DCB announced dividend of TZS 50.00 per share against TZS. 48.00 paid out in 2010.
- (4) CRDB reported a pre-tax profit of TZS 51.01 billion down from TZS 64 billion recorded in 2010. The Board approved dividend payment of TZS 9 per share.

DSE MARKET STATISTICS FOR THE PERIOD OF APRIL 2011 TO JUNE 2012

	July '11	Aug '11	Sept '11	Oct '11	Nov '11	Dec '11	Jan'12	Feb'12	Mar'12	Apr'12	May'12	June'12
Turnover (TZS' Mil)	4,378	4,337	7,638	4,062	1,296	3,937	9,638	1,537	1,402	1,889	2,730	5,525
Volume of shares	10,623,516	4,938,467	4,083,166	5,126,332	1,655,597	14,124,123	5,910,445	2,757,973	3,317,544	3,375,723	4,121,075	6,695,226
Deals	1,036	993	1,154	899	708	397	700	782	821	563	891	1,082
Trading Sessions	20	20	22	20	22	21	21	19	22	18	22	21
Market cap (TZS bil)	5,933	5,977	6,014	6,098	6,094	11,577	11,533	11,675	11,777	11,780.54	5,918.79	12,772.79
Exchange Rate	1,560	1,605	1,631	1,662	1,672	1,582	1,576	1,574	1,574	1,568.33	1,518.33	1,568.91
DSE All Share Index	1,270	1,279	1,287	1,304	1,304	1,303	1,298	1,314	1,326	1,326.14	1,262.82	1,437.84

TBL	1,820	1,820	1,900	2,020	2,020	2,020	2,040	2,400	2,600	2,640	2,500	2,440
TOL	200	200	200	200	200	200	200	200	200	200	220	220
TATEPA	475	475	475	475	475	475	265	285	285	285	325	325
TCC	2,540	2,600	2,620	3,140	3,140	3,140	3,140	3,140	3,200	3,300	3,320	3,320
TCCL	2,060	2,300	2,380	2,380	2,380	2,380	2,380	2,380	2,380	2,380	2,380	2,380
SWIS	630	710	800	800	820	820	870	890	1,000	1,000	1,040	1,040
TPCC	1,960	1,980	2,080	2,080	2,080	2,080	2,080	2,180	2,400	2,400	2,400	2,420
DCB	540	580	610	640	640	640	640	640	640	640	640	640
NMB	850	850	850	850	850	850	850	850	860	900	870	930
CRDB	180	180	177.50	177.50	175.00	172.50	150.00	150.00	150.00	137.50	125.50	122.50
JHL	5,860	5,860	5,860	5,860	5,860	5,860	5,860	5,860	5,860	5,860	5,860	5,860
KA	1,020	1,020	1,020	1,020	1,020	1,020	1,020	1,020	1,020	1,020	1,020	1,020
EABL	2,000	2,000	2,000	2,000	2,000	2,000	2,000	2,000	2,000	2,000	2,000	2,000
KCB	440	440	440	440	440	440	440	440	440	440	440	440
NMG	3,100	3,100	3,100	3,100	3,100	3,100	3,100	3,100	3,100	3,100	3,100	3,100
ABG						13,160	13,160	13,160	13,160	13,160	13,160	13,160
PAL						495	475	475	475	475	475	475

COMPARATIVE MARKET RATIOS

	P/E RATIO					DIVIDEND YIELD					TURNOVER RATIO (Turnover/Mkt Cap)				
	2007	2008	2009	2010	2011	2007	2008	2009	2010	2011	2007	2008	2009	2010	2011
TBL	7.65	7.51	6.73	6.73		0.13	0.11	0.09	0.09	0.10	0.018	0.005	0.005	0.005	0.004
TCC	5.49	5.35	3.89	3.89	4.43	0.13	0.17	0.08	0.08	0.19	0.018	0.019	0.002	0.002	0.020
TCCL	3.49	3.92	3.64	3.64		0.15	0.06	0.10	0.10	-	0.040	0.013	0.043	0.043	0.006
SWIS	3.29	6.59	4.98	4.98	4.16	0.11	0.12	0.16	0.16	0.19	0.051	0.177	0.023	0.023	0.012
TPCC	7.15	8.23	6.15	6.15	7.40	0.04	0.04	0.08	0.08	0.09	0.065	0.027	0.025	0.025	0.009
NMB	7.93	10.00	8.53	8.53	5.92	-	0.03	0.04	0.04	0.06	-	0.027	0.041	0.041	0.043
DCB	-	7.95	5.26	5.26		-	0.06	0.09	0.09	-	-	0.053	0.057	0.057	0.145
CRDB	-	10.26	6.95	6.95	12.51	-	0.01	0.05	0.05	0.05	-	-	0.047	0.047	0.040
TTP	-	1.75	-	-		0.02	0.72	-	-	-	0.060	0.005	0.001	0.001	0.265
TOL	-	-	-	-		-	-	-	-	-	-	0.013	0.002	0.002	0.003
EABL	21.72	11.30	13.04	13.04	7.81	0.04	0.07	0.08	0.08	0.10	-	-	-	-	-
KA	7.15	8.71	-	-	7.11	0.03	-	0.01	0.01	0.03	-	-	-	-	-
JHL	15.53	22.37	18.38	18.38		0.02	0.01	0.01	0.01	-	-	-	-	-	-
KCB	-	12.57	13.61	13.61		-	0.04	0.04	0.04	-	-	-	-	-	-
NMG															-
PAL															-

TANZANIA BREWERIES LIMITED (TBL)				
YEAR	NUMBER OF ISSUED SHARES	PRE-TAX PROFIT	DIVIDEND	MARKET CAPITALIZATION
		(TZS Million)	(TZS Million)	(TZS Million)
2005	294,928,463	67,182	56,036	436,000
2006	294,928,463	85,584	52,202	442,390
2007	294,928,463	95,603	58,986	466,000
2008	94,928,463	109,168	58,986	536,770
2009	294,928,463	115,188	44,239	513,176
2010	294,928,463	133,842	44,239	525,000
2011	294,928,463	173,183	58,986	595,755



SWISSPORT TANZANIA LIMITED (SWISSPORT)				
YEAR	NUMBER OF ISSUED SHARES	PRE-TAX PROFIT	DIVIDEND	MARKET CAPITALIZATION
		(TZS Million)	(TZS Million)	(TZS Million)
2005	36,000,000	4,430	2,524	21,600
2006	36,000,000	5,062	2,796	21,960
2007	36,000,000	5,166	2,862	25,560
2008	36,000,000	4,847	2,592	21,600
2009	36,000,000	5,668	3,238	21,600
2010	36,000,000	6,322	3,327	21,600
2011	36,000,000	10,238	5,671	29,520



TOL GASES LIMITED (TOL)				
YEAR	NUMBER OF ISSUED SHARES	PRE-TAX PROFIT	DIVIDEND	MARKET CAPITALIZATION
		(TZS Million)	(TZS Million)	(TZS Million)
2005	32,000,000	(47.41)	-	10,559
2006	32,000,000	102.28	-	9,596
2007	37,223,686	292.60	-	14,020
2008	37,223,686	(144.62)	-	12,320
2009	37,223,686	-	-	9,981
2010	37,223,686			
2011	37,223,686			8,495



TANZANIA PORTLAND CEMENT COMPANY LIMITED (TWIGA)				
YEAR	NUMBER OF ISSUED SHARES	PRE-TAX PROFIT	DIVIDEND	MARKET CAPITALIZATION
		(TZS Million)	(TZS Million)	(TZS Million)
2005	-	22,410	-	78,267
2006	179,923,100	27,932	5,038	124,150
2007	179,923,100	43,582	7,740	205,110
2008	179,923,100	50,193	12,595	287,880
2009	179,923,100	68,788	23,390	303,066
2010	179,923,100	71,929	25,101	323,860
2011	179,923,100		32,386	374,240



TANZANIA TEA PACKERS LIMITED (TATEPA)				
YEAR	NUMBER OF ISSUED SHARES	PRE-TAX PROFIT	DIVIDEND	MARKET CAPITALIZATION
		(TZS Million)	(TZS Million)	(TZS Million)
2005	16,430,000	(2,505)	-	6,720
2006	16,430,000	2,255	740	6,720
2007	17,857,165	(1,593)	1,786	9,110
2008	17,857,165	6,077	6,518	9,110
2009	17,857,165	(504)	-	8,750
2010	17,857,165	292	-	8,600
2011	17,857,165			8,482

KENYA AIRWAYS LIMITED (KA)				
YEAR	NUMBER OF ISSUED SHARES	PRE-TAX PROFIT	DIVIDEND	MARKET CAPITALIZATION
		(TZS Million)	(TZS Million)	(TZS Million)
2005	461,615,484	81,236	9,232	461,620
2006	461,615,484	125,280	13,332	720,120
2007	61,615,484	107,550	14,544	692,420
2008	461,615,484	102,156	-	692,420
2009	61,615,484	(98,497)	8,027	692,420
2010	61,615,484	92,537	12,464	600,100
2011	61,615,484	66,196	12,966	470,848



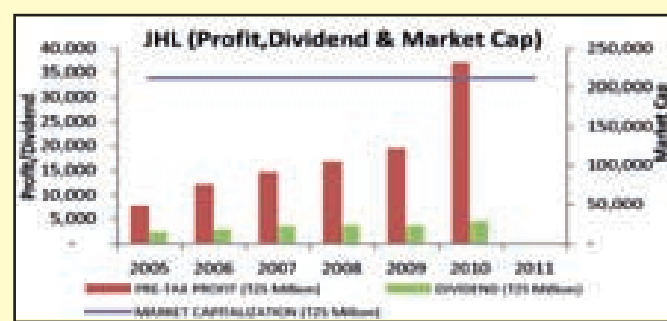
TANZANIA CIGARETTE COMPANY (TCC)				
YEAR	NUMBER OF ISSUED SHARES	PRE-TAX PROFIT	DIVIDEND	MARKET CAPITALIZATION
		(TZS Million)	(TZS Million)	(TZS Million)
2005	100,000,000	23,767	15,578	150,000
2006	100,000,000	22,360	10,000	148,000
2007	100,000,000	33,622	17,500	134,000
2008	100,000,000	44,564	27,500	166,000
2009	100,000,000	65,978	15,000	182,000
2010	100,000,000	84,100	30,000	222,000
2011	100,000,000	101,400	60,000	314,000

EAST AFRICAN BREWERIES LIMITED (EABL)				
YEAR	NUMBER OF ISSUED SHARES	PRE-TAX PROFIT	DIVIDEND	MARKET CAPITALIZATION
		(TZS Million)	(TZS Million)	(TZS Million)
2005	658,978,630	131,568	62,208	1,317,860
2006	658,978,630	145,810	66,096	1,317,860
2007	58,978,630	191,444	104,501	1,317,860
2008	658,97,630	228,215	117,957	1,317,860
2009	658,97,630	202,259	107,390	1,317,860
2010	58,978,630	226,224	103,789	1,318,000
2011	58,978,630	229,188	129,460	1,317,957



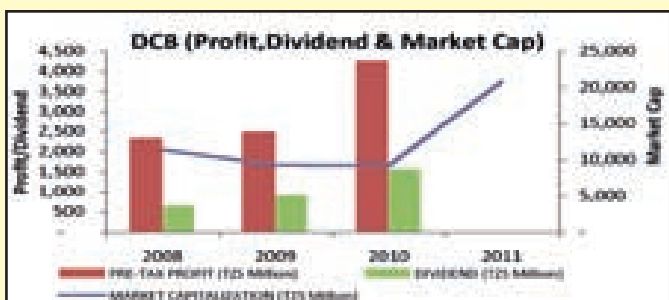
TANGA CEMENT COMPANY LIMITED (SIMBA)				
YEAR	NUMBER OF ISSUED SHARES	PRE-TAX PROFIT	DIVIDEND	MARKET CAPITALIZATION
		(TZS Million)	(TZS Million)	(TZS Million)
2005	63,671,045	10,528	3,629	54,120
2006	63,671,045	23,065	11,970	61,124
2007	63,671,045	34,422	11,779	77,679
2008	63,671,045	43,219	7,641	118,430
2009	63,671,045	45,830	11,397	109,514
2010	63,671,045	30,380	16,490	121,000
2011	63,671,045			151,537

JUBILEE HOLDINGS LIMITED (JHL)				
YEAR	NUMBER OF ISSUED SHARES	PRE-TAX PROFIT	DIVIDEND	MARKET CAPITALIZATION
		(TZS Million)	(TZS Million)	(TZS Million)
2005	36,000,000	7,607	2,304	210,960
2006	36,000,000	12,097	2,754	210,960
2007	36,000,000	14,563	3,443	210,960
2008	36,000,000	16,690	3,544	210,960
2009	45,000,000	19,403	3,521	210,960
2010	45,000,000	36,900	4,455	210,960
2011	45,000,000			210,960

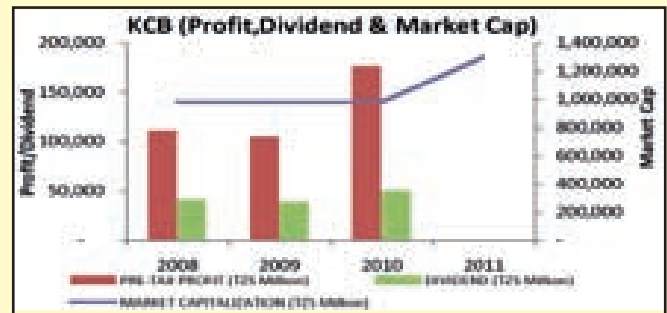


DAR ES SALAAM COMMUNITY BANK (DCB)				
YEAR	NUMBER OF ISSUED SHARES	PRE-TAX PROFIT	DIVIDEND	MARKET CAPITALIZATION
		(TZS Million)	(TZS Million)	(TZS Million)
2005	1,795,588	523	-	-
2006	1,795,588	853	-	-
2007	2,535,302	2,285	304	-
2008	32,393,236	2,320	648	11,340
2009	32,393,236	2,484	907	9,232
2010	32,393,236	4,243	1,555	9,100
2011	32,393,236			20,732

CRDB BANK PLC (CRDB)				
YEAR	NUMBER OF ISSUED SHARES	PRE-TAX PROFIT	DIVIDEND	MARKET CAPITALIZATION
		(TZS Million)	(TZS Million)	(TZS Million)
2005	123,666,600	24,390	1,855	-
2006	123,666,600	38,446	2,102	-
2007	247,333,200	51,703	4,205	-
2008	2,176,532,160	60,005	4,253	485,000
2009	2,176,532,160	61,922	15,236	255,743
2010	2,176,532,160	65,637	17,400	250,300
2011	2,176,532,160	70,833	19,589	375,452



KENYA COMMERCIAL BANK (KCB)				
YEAR	NUMBER OF ISSUED SHARES	PRE-TAX PROFIT	DIVIDEND	MARKET CAPITALIZATION
		(TZS Million)	(TZS Million)	(TZS Million)
2005	2,217,777,777	28,758	15,502	-
2006	2,217,777,777	55,313	24,262	-
2007	2,217,777,777	77,861	27,013	-
2008	2,217,777,777	111,418	41,095	975,822
2009	2,217,777,777	104,564	38,567	975,822
2010	2,217,777,777	176,364	49,928	975,800
2011	2,217,777,777			1,298,074



PRIMARY BONDS MARKET/TREASURY BILLS SUBSCRIPTION LEVELS

TREASURY BONDS ISSUED AND THEIR SUBSCRIPTION LEVEL IN THE PRIMARY BOND MARKET

TREASURY BILLS AUCTIONED SUBSCRIPTION LEVEL

(Note: T.Bills are not traded on the Exchange)

January to March 2011

15-Dec-10	2yr	8.65	7.939	40.00	154.62	114.62	387%
24-Feb-11	5yr	10.27	9.58	40.00	87.00	47.00	218%
13-Jan-11	7yr	12.27	11.212	40.00	27.49	(12.51)	69%
27-Jan-11	10yr	13.84	13.118	20.00	26.20	6.20	131%
24-Mar-11	10yr	14.15	13.345	40.00	47.46	7.46	119%

April to June 2011

6-Apr-11	2yr	8.12	7.86	40.00	136.47	96.47	341%
21-Apr-11	5yr	10.65	9.72	40.00	68.07	28.07	170%
18-May-11	10yr	13.69	13.01	40.00	129.70	89.70	324%
1-Jun-11	5yr	8.05	7.85	40.00	115.21	75.21	288%
15-Jun-11	5yr	10.76	9.76	40.00	99.05	59.05	248%
29-Jun-11	10yr	12.81	11.5	40.00	89.59	49.59	224%

July to September 2011

13-Jul-11	10yr	12.64	12.259	20.00	78.67	58.67	393%
27-Jul-11	5yr	12.46	10.425	20.00	39.70	19.70	199%
10-Aug-11	5yr	12.45	10.421	9.45	29.46	20.01	312%
7-Sep-11	10yr	13.30	12.730	30.00	55.57	25.57	185%
21-Sep-11	2yr	9.59	8.075	25.00	57.84	32.84	231%

October to December 2011

16-Nov-11	2yr	14.01	8.74	30.00	48.24	18.24	161%
5-Oct-11	5yr			35.00	38.64	3.64	110%
30-Nov-11	5yr	13.15	10.702	30.00	8.35	(21.65)	28%
19-Oct-11	7yr	14.99	12.74	25.00	44.31	19.31	177%
2-Nov-11	10yr	16.35	15.01	20.00	12.85	(7.15)	64%
28-Dec-11	10yr	16.98	15.51	20.00	0.93	(19.07)	5%

January to March 2011

Jan.	240.00	291.00	51.00	121%
Feb.	200.00	559.40	359.40	280%
Mar.	300.00	695.90	395.90	232%

April to June 2011

April	200.00	379.90	179.90	190%
May	201.00	493.50	292.50	246%
June	100.00	151.98	51.98	152%

July to September 2011

July	200.00	118.82	(81.18)	59%
August	300.00	308.51	8.50	103%
September	200.00	186.65	(13.35)	93%

October to December 2011

Oct	200	231.96	31.96	116%
Nov	200	234.46	34.46	117%
Dec	200	168.93	(31.07)	84%

January to March 2012								January to March 2012				
11-Jan-12	2yr	17.85	9.341	43.85	35.00	(8.85)	80%	Jan	200	243.46	43.46	122%
7-Mar-12	2yr	13.73	8.692	75.75	30.00	(45.75)	40%	Feb	300	862.03	562.03	287%
25-Jan-12	5yr	17.049	12.37	25.00	79.14	54.14	317%	Mar	200	221.71	21.71	111%
21-Mar-12	5yr	14.823	11.396	35.00	47.87	12.87	137%	April to June 2012				
8-Feb-12	7yr	13.84	12.077	25.00	104.35	79.35	417%	April	136	139.82	88.06	103%
22-Feb-12	10yr	14.80	13.826	20.00	49.09	29.09	245%	May	134	206.58	93.01	154%
April to June 2012								June	139	262.45	182.00	189%
4-Apr-12	2yr	14,6289	12,5251	25.00	24.12	24.12	96%					
18-Apr-12	10yr	14,9945	13,972	20.00	14.51	0.46	73%					
2-May-12	2yr	14,4455	8,8028	30.00	47.55	5.00	159% ⁰⁰					
16-May-12	5yr	14,9344	11,4434	30.00	31.63	15.00	105%					
30-May-12	7yr	15,4466	13,0034	20.00	15.61	15.57	78%					
13-Jun-12	2yr	14,7647	88255	30.00	47.62	20.00	159%					
27-Jun-12	10yr	15,1633	14,0993	15.00	43.61	15.00	291%					

Bond	Issue Date	Interest Rate	Maturity Date	Closing Principal (FV)
2:TWO YEARS BONDS				
7.82% issue NO.272 Treasury Bond 2010/2012(T.1)	15-Jul-2010	7.82%	15-Jul-2012	90,000,100,000.00
7.82% Bond NO.253 Treasury Bond 2010/2012(T.1)	23-Sep-2010	7.82%	23-Sep-2012	33,417,400,000.00
7.82% Bond NO.274 Treasury Bond 2010/2012(T.1)	4-Nov-2010	7.82%	4-Nov-2012	60,000,000,000.00
7.82% Bond NO.259 Treasury Bond 2010/2012(T.1)	16-Dec-2010	7.82%	16-Dec-2012	40,000,000,000.00
7.82% Bond NO.263 Treasury Bond 2011/2013(T.1)	10-Feb-2011	7.82%	10-Feb-2013	40,000,000,000.00
7.82% Bond NO.267 Treasury Bond 2011/2013(T.1)	7-Apr-2011	7.82%	7-Apr-2013	40,000,000,000.00
7.82% Bond NO.268 Treasury Bond 2011/2013(T.1)	1-Jun-2011	7.82%	2-Jun-2013	60,000,000,000.00
7.82% Bond NO.279 Treasury Bond 2011/2013(T.1)	22-Sep-2011	7.82%	23-Sep-2013	25,000,000,000.00
7.82% Bond NO.283 Treasury Bond 2011/2013(T.1)	17-Nov-11	7.82%	17-Nov-13	8,500,000,000.00
7.82% Bond NO.287 Treasury Bond 2012/2014(T.1)	13-Jan-12	7.82%	13-Jan-14	25,000,000,000.00
7.82% Bond NO.291 Treasury Bond 2012/2014(T.1)	8-Mar-12	7.82%	8-Mar-14	30,000,000,000.00
7.82% Bond NO.295 Treasury Bond 2012/2014(T.1)	2-May-12	7.82%	3-May-14	5,000,000,000.00
7.82% Bond NO.298 Treasury Bond 2012/2014(T.1)	12-Jun-12	7.82%	14-Jun-14	30,000,000,000.00
Total 2 Year Bond				486,917,500,000.00
5 YEAR BONDS				
9.18% Issue NO.17Treasury Bond 2007/2012(T.1)	5-Jul-2007	9.18%	2-Jul-2012	5,000,000,000.00
9.18% Issue NO.17Treasury Bond 2007/2012(T.2)	2-Aug-2007	9.18%	2-Jul-2012	4,992,000,000.00
9.18% Issue NO.17Treasury Bond 2007/2012(T.3)	30-Aug-2007	9.18%	2-Jul-2012	5,643,500,000.00
9.18% Issue NO.17Treasury Bond 2007/2012(T.4)	20-Sep-2007	9.18%	2-Jul-2012	5,000,000,000.00

9.18% Issue NO.18 Treasury Bond 2007/2012(T.1)	18-Oct-2007	9.18%	18-Oct-2012	5,000,000,000.00
9.18% Issue NO.18 Treasury Bond 2007/2012(T.2)	15-Nov-2007	9.18%	18-Oct-2012	5,000,000,000.00
9.18% Issue NO.18 Treasury Bond 2007/2012(T.3)	13-Dec-2007	9.18%	18-Oct-2012	5,000,000,000.00
9.18% Issue NO.19 Treasury Bond 2007/2012(T.1)	16-Jan-2008	9.18%	14-Jan-2013	15,000,000,000.00
9.18% Issue NO.19 Treasury Bond 2007/2012(T.2)	13-Mar-2008	9.18%	14-Jan-2013	21,400,000,000.00
9.18% Issue NO.20 Treasury Bond 2007/2012(T.1)	22-Oct-2008	9.18%	23-Oct-2013	13,487,700,000.00
9.18% Issue NO.22 Treasury Bond 2009/2014(T.1)	14-Jan-2009	9.18%	13-Jan-2014	7,050,000,000.00
9.18% Issue NO.230 Treasury Bond 2009/2014(T.1)	7-May-2009	9.18%	7-May-2014	27,200,000,000.00
9.18% Issue NO.237 Treasury Bond 2009/2014(T.1)	9-Sep-2009	9.18%	9-Sep-2014	74,400,100,000.00
9.18% Issue NO.241 Treasury Bond 2009/2014(T.1)	13-Jan-2010	9.18%	14-Jan-2015	27,276,000,000.00
9.18% Bond NO.241 Treasury Bond 2010/2015(T.1)	6-May-2010	9.18%	6-May-2015	30,000,000,000.00
9.18% Bond NO.250 Treasury Bond 2010/2015(T.1)	11-Aug-2010	9.18%	12-Aug-2015	42,000,000,000.00
9.18% Bond NO.254 Treasury Bond 2010/2015(T.1)	7-Oct-2010	9.18%	7-Oct-2015	25,000,000,000.00
9.18% Bond NO.258 Treasury Bond 2010/2015(T.1)	2-Dec-2010	9.18%	2-Dec-2015	40,000,000,000.00
9.18% Bond NO.260 Treasury Bond 2010/2015(T.1)	30-Dec-2010	9.18%	2-Dec-2015	4,000,000,000.00
9.18% Bond NO.260 Treasury Bond 2011/2016(T.1)	24-Feb-2011	9.18%	24-Feb-2016	40,000,000,000.00
9.18% Bond NO.268 Treasury Bond 2011/2016(T.1)	21-Apr-2011	9.18%	21-Feb-2016	37,530,000,000.00
9.18% Bond NO.272 Treasury Bond 2011/2016(T.1)	16-Jun-2011	9.18%	16-Jun-2016	40,000,000,000.00
9.18% Bond NO.275 Treasury Bond 2011/2016(T.1)	27-Jul-2011	9.18%	28-Jul-2016	11,900,700,000.00
9.18% Bond NO.276 Treasury Bond 2011/2016(T.1)	11-Aug-2011	9.18%	12-Aug-2016	9,450,000,000.00
9.18% Bond NO.284 Treasury Bond 2011/2016(T.1)	30-Nov-2011	9.18%	1-Dec-2016	7,153,900,000.00
9.18% Bond NO.288 Treasury Bond 2012/2017(T.1)	26-Jan-2012	9.18%	25-Jan-2016	35,380,500,000.00
9.18% Bond NO.292 Treasury Bond 2012/2017(T.1)	22-Mar-2012	9.18%	22-Mar-2017	34,983,000,000.00
9.18% Bond NO.296 Treasury Bond 2012/2017(T.1)	16-May-2012	9.18%	17-May-2017	15,200,000,000.00
Total 5 Year Bond				594,047,400,000.00
7 YEAR BONDS				
10.08% Issue NO.6 Treasury Bond 2005/2012(T.1)	20-Jul-2005	10.08%	21-Jul-2012	4,000,000,000.00
10.08% Issue NO.6 Treasury Bond 2005/2012(T.2)	24-Aug-2005	10.08%	21-Jul-2012	4,000,000,000.00
10.08% Issue NO.7 Treasury Bond 2005/2012(T.1)	12-Oct-2005	10.08%	13-Oct-2012	4,000,000,000.00
10.08% Issue NO.7 Treasury Bond 2005/2012(BOT)	2-Nov-2005	10.08%	13-Oct-2012	4,000,000,000.00
10.08% Issue NO.7 Treasury Bond 2005/2012(T.2)	23-Nov-2005	10.08%	13-Oct-2012	4,000,000,000.00
10.08% Issue NO.7 Treasury Bond 2005/2012(T.3)	15-Dec-2005	10.08%	13-Oct-2012	4,000,000,000.00
10.08% Issue NO.8 Treasury Bond 2006/2013(T.1)	10-Jan-2006	10.08%	13-Jan-2013	4,000,000,000.00

10.08% Issue NO.8 Treasury Bond 2006/2013(T.2)	8-Feb-2006	10.08%	13-Jan-2013	5,943,000,000.00
10.08% Issue NO.8 Treasury Bond 2006/2013(T.3)	8-Mar-2006	10.08%	9-Mar-2013	3,600,000,000.00
10.08% Issue NO.8 Treasury Bond 2006/2013(T.4)	29-Mar-2006	10.08%	9-Mar-2013	4,000,000,000.00
10.08% Issue NO.8 Treasury Bond 2006/2013(T.5)	12-Apr-2006	10.08%	9-Mar-2013	3,200,000,000.00
10.08% Issue NO.9 Treasury Bond 2006/2013(T.1)	10-May-2006	10.08%	11-May-2013	4,000,000,000.00
10.08% Issue NO.9 Treasury Bond 2006/2013(T.2)	7-Jun-2006	10.08%	11-May-2013	4,000,000,000.00
10.08% Issue NO.10 Treasury Bond 2006/2013(T.1)	5-Jul-2006	10.08%	6-Jul-2013	4,000,000,000.00
10.08% Issue NO.10 Treasury Bond 2006/2013(T.2)	2-Aug-2006	10.08%	6-Jul-2013	3,299,200,000.00
10.08% Issue NO.10 Treasury Bond 2006/2013(T.3)	30-Aug-2006	10.08%	6-Jul-2013	4,000,000,000.00
10.08% Issue NO.10 Treasury Bond 2006/2013(T.4)	13-Sep-2006	10.08%	6-Jul-2013	5,619,900,000.00
10.08% Issue NO.11 Treasury Bond 2006/2013(T.1)	11-Oct-2006	10.08%	5-Oct-2013	3,000,000,000.00
10.08% Issue NO.11 Treasury Bond 2006/2013(T.2)	8-Nov-2006	10.08%	5-Oct-2013	4,000,000,000.00
10.08% Issue NO.12 Treasury Bond 2007/2014(T.1)	10-Jan-2007	10.08%	11-Jan-2014	2,800,000,000.00
10.08% Issue NO.12 Treasury Bond 2007/2014(T.2)	7-Feb-2007	10.08%	11-Jan-2014	4,000,000,000.00
10.08% Issue NO.13 Treasury Bond 2007/2014(T.3)	4-Apr-2007	10.08%	5-Apr-2014	2,886,300,000.00
10.08% Issue NO.13 Treasury Bond 2007/2014(T.2)	3-May-2007	10.08%	5-Apr-2014	4,000,000,000.00
10.08% Issue NO.13 Treasury Bond 2007/2014(T.3)	31-May-2007	10.08%	5-Apr-2014	5,000,000,000.00
10.08% Issue NO.13 Treasury Bond 2007/2014(T.4)	28-Jun-2007	10.08%	5-Apr-2014	5,000,000,000.00
10.08% Issue NO.14 Treasury Bond 2007/2014(T.1)	19-Jul-2007	10.08%	16-Jul-2014	1,522,400,000.00
10.08% Issue NO.14 Treasury Bond 2007/2014(T.2)	10-Aug-2007	10.08%	16-Jul-2014	3,565,640,000.00
10.08% Issue NO.14 Treasury Bond 2007/2014(T.3)	6-Sep-2007	10.08%	16-Jul-2014	5,000,000,000.00
10.08% Issue NO.15 Treasury Bond 2007/2014(T.1)	11-Oct-2007	10.08%	11-Oct-2014	5,000,000,000.00
10.08% Issue NO.18 Treasury Bond 2007/2014(T.2)	8-Nov-2007	10.08%	11-Oct-2014	5,000,000,000.00
10.08% Issue NO.18 Treasury Bond 2007/2014(T.3)	6-Dec-2007	10.08%	11-Oct-2014	4,646,700,000.00
10.08% Issue NO.19 Treasury Bond 2008/2015 (T.1)	14-Feb-2008	10.08%	11-Feb-2015	22,947,000,000.00
10.08% Issue NO.20 Treasury Bond 2008/2015 (T.1)	17-Jul-2008	10.08%	17-Jul-2015	17,213,500,000.00
10.08% Issue NO.20 Treasury Bond No. 232. 2009/2016 (T.1)	9-Apr-2009	10.08%	6-Apr-2016	10,074,000,000.00
10.08% Issue NO.20 Treasury Bond No. 236. 2009/2016 (T.1)	12-Aug-2009	10.08%	12-Aug-2016	43,600,000,000.00
10.08% Issue NO.20 Treasury Bond No. 239. 2009/2016 (T.1)	5-Nov-2009	10.08%	5-Nov-2016	66,588,200,000.00
10.08% Issue NO.20 Treasury Bond No. 243. 2010/2017 (T.1)	11-Mar-2010	10.08%	11-Mar-2017	27,500,100,000.00
10.08% Treasury Bond No. 246, 2010/2017 (T.1)	19-May-2010	10.08%	20-May-2017	30,000,000,000.00
10.08% Treasury Bond No. 251, 2010/2017 (T.1)	25-Aug-2010	10.08%	26-Aug-2017	37,635,000,000.00
10.08% Treasury Bond No. 255, 2010/2017 (T.1)	21-Oct-2010	10.08%	21-Oct-2017	22,000,000,000.00
10.08% Treasury Bond No. 261, 2011/2018 (T.1)	13-Jan-2011	10.08%	11-Jan-2018	24,900,000,000.00

10.08% Treasury Bond No. 265, 2011/2018 (T.1)	10-Mar-2011	10.08%	10-Mar-2018	28,175,100,000.00
10.08% Treasury Bond No. 269, 2011/2018 (T.1)	4-May-2011	10.08%	5-May-2018	23,165,300,000.00
10.08% Treasury Bond No. 273, 2011/2018 (T.1)	30-Jun-2011	10.08%	30-Jun-2018	39,993,000,000.00
10.08% Treasury Bond No. 281, 2011/2018 (T.1)	20-Oct-2011	10.08%	20-Oct-2018	10,000,000,000.00
10.08% Treasury Bond No. 289, 201/2019 (T.1)	8-Feb-2012	10.08%	8-Feb-2019	25,000,000,000.00
10.08% Treasury Bond No. 293, 2012/2019 (T.1)	5-Apr-2012	10.08%	5-Apr-2019	24,207,900,000.00
10.08% Treasury Bond No. 297, 2012/2019 (T.1)	30-May-2012	10.08%	31-May-2019	15,570,000,000.00
Total 7 year bond				593,652,240,000.00
10-YEARS BONDS				
8.5% issue NO.1 Treasury Bond 2002/20012(T.1)	30-Oct-2002	11.44%	31-Oct-2012	5,000,000,000.00
8.5% issue NO.1 Treasury Bond 2002/20012(T.2)	27-Nov-2002	11.44%	31-Oct-2012	3,150,000,000.00
8.5% issue NO.1 Treasury Bond 2002/20012(T.3)	24-Dec-2002	11.44%	31-Oct-2012	3,979,000,000.00
7.5% issue NO.2 Treasury Bond 2003/20013(T.1)	29-Jan-2003	11.44%	30-Jan-2013	500,000,000.00
7.5% issue NO.2 Treasury Bond 2003/20013(T.2)	26-Feb-2003	11.44%	30-Jan-2013	530,000,000.00
7.5% issue NO.2 Treasury Bond 2003/20013(T.3)	26-Mar-2003	11.44%	30-Jan-2013	1,700,000,000.00
7.5% issue NO.2 Treasury Bond 2003/20013(T.4)	23-Apr-2003	11.44%	30-Jan-2013	2,000,000,000.00
7.5% issue NO.2 Treasury Bond 2003/20013(T.5)	28-May-2003	11.44%	30-Jan-2013	2,500,000,000.00
7.5% issue NO.2 Treasury Bond 2003/20013(T.6)	25-Jun-2003	11.44%	30-Jan-2013	3,000,000,000.00
7.5% issue NO.2 Treasury Bond 2003/20013(T.7)	23-Jul-2003	11.44%	30-Jan-2013	2,500,000,000.00
7.5% issue NO.2 Treasury Bond 2003/20013(T.9)	24-Sep-2003	11.44%	30-Jan-2013	1,750,000,000.00
11.44% issue NO.3 Treasury Bond 2003/20013(T.1)	22-Oct-2003	11.44%	23-Oct-2013	2,500,000,000.00
11.44% issue NO.3 Treasury Bond 2003/20013(T.2)	25-Nov-2003	11.44%	23-Oct-2013	2,560,000,000.00
11.44% issue NO.3 Treasury Bond 2003/20013(T.3)	23-Dec-2003	11.44%	23-Oct-2013	2,010,000,000.00
11.44% issue NO.3 Treasury Bond 2003/20013(T.4)	28-Jan-2004	11.44%	23-Oct-2013	4,030,000,000.00
11.44% issue NO.3 Treasury Bond 2003/20013(T.5)	25-Feb-2004	11.44%	23-Oct-2013	2,000,000,000.00
11.44% issue NO.3 Treasury Bond 2003/20013(T.6)	24-Mar-2004	11.44%	23-Oct-2013	3,000,000,000.00
11.44% issue NO.3 Treasury Bond 2003/20013(T.7)	28-Apr-2004	11.44%	23-Oct-2013	2,001,100,000.00
11.44% issue NO.3 Treasury Bond 2003/20013(T.8)	26-May-2004	11.44%	23-Oct-2013	25,000,000.00
11.44% issue NO.3 Treasury Bond 2003/20013(T.9)	28-Jul-2004	11.44%	23-Oct-2013	1,245,100,000.00
11.44% issue NO.4 Treasury Bond 2003/2013(T.2)	29-Sep-2004	11.44%	26-Aug-2014	1,438,900,000.00
11.44% Issue NO.4 Treasury Bond 2003/2014(T.4)	23-Mar-2005	11.44%	28-Aug-2014	753,800,000.00
11.44% Issue NO.5 Treasury Bond 2005/2015(T.1)	27-Apr-2005	11.44%	28-Apr-2015	1,611,000,000.00
11.44% Issue NO.5 Treasury Bond 2005/2015(T.2)-BOT	25-May-2005	11.44%	28-Aug-2015	4,000,000,000.00

11.44% Issue NO.6 Treasury Bond 2005/2015(T.1)-BOT	28-Jul-2005	11.44%	27-Jul-2015	4,000,000,000.00
11.44% Issue NO.6 Treasury Bond 2005/2015(T.2)-BOT	31-Aug-2005	11.44%	27-Jul-2015	4,000,000,000.00
11.44% Issue NO.7 Treasury Bond 2005/2015(T.1)	19-Oct-2005	11.44%	20-Apr-2015	4,000,000,000.00
11.44% Issue NO.7 Treasury Bond 2005/2015(T.2)	9-Nov-2005	11.44%	20-Apr-2015	4,620,000,000.00
11.44% Issue NO. 7 Treasury Bond 2005/2015(T.3)-BOT	29-Nov-2005	11.44%	20-Apr-2015	4,000,000,000.00
11.44% Issue NO. 7 Treasury Bond 2005/2015(T.4)	21-Dec-2005	11.44%	20-Oct-2015	5,350,000,000.00
11.44% Issue NO.8 Treasury Bond 2005/2015(T.1)	18-Jan-2006	11.44%	19-Jan-2016	4,000,000,000.00
11.44% issue NO.8 Treasury Bond 2006/2016(T.2)	15-Feb-2006	11.44%	19-Jan-2016	4,000,000,000.00
11.44% issue NO.8 Treasury Bond 2006/2016(T.3)	15-Mar-2006	11.44%	19-Jan-2016	4,000,000,000.00
11.44% issue NO.9 Treasury Bond 2006/2016(T.1)	5-Apr-2006	11.44%	6-Apr-2016	5,525,000,000.00
11.44% issue NO.9 Treasury Bond 2006/2016(T.3)	14-Jun-2006	11.44%	6-Apr-2016	4,000,000,000.00
11.44% issue NO.10 Treasury Bond 2006/2016(T.1)	12-Jul-2006	11.44%	13-Jul-2016	3,634,000,000.00
11.44% issue NO.10 Treasury Bond 2006/2016(T.2)	9-Aug-2006	11.44%	13-Jul-2016	1,200,000,000.00
11.44% issue NO.10 Treasury Bond 2006/2016(T.3)	6-Sep-2006	11.44%	13-Jul-2016	4,000,000,000.00
11.44% issue NO.11 Treasury Bond 2006/2016(T.1)	4-Oct-2006	11.44%	5-Oct-2016	4,000,000,000.00
11.44% issue NO.11 Treasury Bond 2006/2016(T.2)	1-Nov-2006	11.44%	5-Oct-2016	3,700,000,000.00
11.44% issue NO.11 Treasury Bond 2006/2016(T.3)	29-Nov-2006	11.44%	5-Oct-2016	4,000,000,000.00
11.44% issue NO.12 Treasury Bond 2007/2017(T.1)	1-Feb-2007	11.44%	1-Feb-2017	4,000,000,000.00
11.44% issue NO.12 Treasury Bond 2007/2017(T.2)	1-Mar-2007	11.44%	1-Feb-2017	247,700,000.00
11.44% issue NO.12 Treasury Bond 2007/2017(T.3)	29-Mar-2007	11.44%	1-Feb-2017	1,635,300,000.00
11.44% issue NO.13 Treasury Bond 2007/2017(T.1)	26-Apr-2007	11.44%	27-Apr-2017	4,000,000,000.00
11.44% issue NO.13 Treasury Bond 2007/2017(T.2)	24-May-2007	11.44%	27-Apr-2017	5,000,000,000.00
11.44% issue NO.13 Treasury Bond 2007/2017(T.3)	21-Jun-2007	11.44%	27-Apr-2017	2,504,900,000.00
11.44% issue NO.14 Treasury Bond 2007/2017(T.1)	12-Jul-2007	11.44%	8-Jul-2017	1,955,700,000.00
11.44% issue NO.14 Treasury Bond 2007/2017(T.2)	16-Aug-2007	11.44%	8-Jul-2017	4,322,000,000.00
11.44% issue NO.14 Treasury Bond 2007/2017(T.3)	13-Sep-2007	11.44%	8-Jul-2017	5,000,000,000.00
11.44% issue NO.15 Treasury Bond 2007/2017(T.1)	4-Oct-2007	11.44%	30-Sep-2017	5,000,000,000.00
11.44% issue NO.15 Treasury Bond 2007/2017(T.2)	1-Nov-2007	11.44%	4-Oct-2017	5,000,000,000.00
11.44% issue NO.15 Treasury Bond 2007/2017(T.3)	29-Nov-2007	11.44%	4-Oct-2017	1,699,800,000.00
11.44% issue NO.16 Treasury Bond 2008/2018(T.1)	22-May-2008	11.44%	21-May-2018	23,511,200,000.00
11.44% issue NO.18 Treasury Bond 2008/2018(T.1)	14-Aug-2008	11.44%	11-Aug-2018	6,161,500,000.00
11.44% issue NO.19 Treasury Bond 2009/2019(T.1)	12-Feb-2009	11.44%	2-Dec-2019	8,497,600,000.00
11.44% Bond NO 10 Treasury Bond 2009/2019(A.1)	2-Jul-2009	11.44%	2-Jul-2019	31,000,000,000.00
11.44% Bond No 10 Treasury Bond 2009/2019(A.1)	3-Dec-2009	11.44%	3-Dec-2019	26,361,600,000.00

11.44% Bond No 10 Treasury Bond 2010/2020(A.1)	22-Apr-2010	11.44%	22-Apr-2020	30,000,100,000.00
11.44% Bond No 10 Treasury Bond 2010/2020(A.1)	3-Jun-2010	11.44%	3-Jun-2020	67,181,900,000.00
11.44% Bond No 252 Treasury Bond 2010/2020(T1)	8-Sep-2010	11.44%	8-Sep-2020	16,000,000,000.00
11.44% Bond No 257 Treasury Bond 2010/2020(T1)	18-Nov-2010	11.44%	18-Nov-2020	20,000,000,000.00
11.44% Treasury Bond No. 262, 2011/2021 (T.1)	27-Jan-2011	11.44%	27-Jan-2021	20,000,000,000.00
11.44% Treasury Bond No. 266, 2011/2021 (T.1)	24-Mar-2011	11.44%	24-Mar-2021	38,625,000,000.00
11.44% Treasury Bond No. 270, 2011/2021 (T.1)	18-May-2011	11.44%	19-May-2021	57,000,000,000.00
11.44% Treasury Bond No. 274, 2011/2021 (T.1)	13-Jul-2011	11.44%	14-Jul-2021	20,000,000,000.00
11.44% Treasury Bond No. 278, 2011/2021 (T.1)	8-Sep-2011	11.44%	8-Sep-2021	30,000,000,000.00
11.44% Treasury Bond No. 282, 2011/2021 (T.1)	3-Nov-2011	11.44%	3-Nov-2021	19,840,000,000.00
11.44% Treasury Bond No. 286, 2011/2021 (T.1)	29-Dec-2011	11.44%	29-Dec-2021	876,500,000.00
11.44% Treasury Bond No. 290, 2011/2021 (T.1)	21-Feb-2012	11.44%	23-Feb-2022	20,000,000,000.00
11.44% Treasury Bond No. 294, 2012/2022 (T.1)	19-Apr-2012	11.44%	19-Apr-2022	457,000,000.00
11.44% Treasury Bond No. 0000, 2012/2022 (T.1)	27-Jun-2012	11.44%	27-Jun-2022	15,000,000,000.00
Total 10 year bond		597,233,700,000.00		612,690,700,000.00
Total Value of Outstanding Treasury Bonds				2,287,307,840,000.00

Contact Addresses of Licensed Stock Brokers

<p>CORE securities Ltd 4th Floor, Elite City Tower Samora Avenue, Dar es Salaam Tel: +255 22 212 3103 Fax: +255 22 218 2521 info@coresecurities.co.tz</p>	<p>Orbit Securities Co. Ltd 4th Floor, Golden Jubilee Tower, PSPF Building Ohio Street, Dar es Salaam Tel: +255 22 211 1758 Fax: +255 22 211 3067 orbit@orbit.co.tz</p>	<p>Rasilimali Ltd 3rd Floor, Consolidated Holdings Building Samora Avenue, Dar es Salaam Tel: +255 22 211 1711 Fax: +255 22 212 2883 rasilimali@africaonline.co.tz</p>
<p>Tanzania Securities Ltd 7th Floor, IPS Building Samora Avenue/ Azikiwe Street, Dar es Salaam Tel: +255 22 211 2807 Fax: +255 22 211 2809 tsl@muchs.ac.tz</p>	<p>Vertex International Securities Ltd Annex Building-Zambia High Commission Sokine/Ohio Street, Dar es Salaam Tel: +255 22 211 6382 Fax: +255 22 210387 vertex@vertex.co.tz</p>	<p>Solomon Stockbrokers Co. Ltd Ground Floor, PPF House Samora Avenue/ Morogoro Road, Dar es Salaam Tel: +255 22 211 2874 Fax: +255 22 213 1969 solomon@simbanet.net</p>
	<p>ZANSecurities Ltd Mezzanine Floor, Haidary Plaza P.O. Box 5366, Dar es Salaam Tel +255 22 2126415 Fax: +255 22 2126414 info@zansec.com</p>	